

MOYA



KISHA SOFA

THIS HAPPINESS CONSISTED OF NOTHING ELSE BUT THE HARMONY OF THE FEW THINGS AROUND ME WITH MY OWN EXISTENCE, A FEELING OF CONTENTMENT AND WELL-BEING THAT NEEDED NO CHANGES AND NO INTENSIFICATION.

HERMAN HESSE

The Kisha opens towards the space, calling for relaxation and enjoyment. The backrest and armrests are created from a single plane, which makes the shape of this sofa simplified to the extreme. Extra large cushions will allow you to take the most comfortable position.

The Kisha is a spacious sofa, without any unnecessary elements – pure harmony and elegance. An amazing effects can be achieved through a combination of colors and materials that cover the structure and cushions.

MOYA

DESCRIPTION



1 - internal frame upholstery

flexible cold-shaped polyurethane foam, polyester fiber cover

2 - internal frame

tubular steel and steel profiles, poplar, solid wood and plywood

3 - seat cushions and supports

shaped polyurethane of various densities, covered with down-filled special fabric, elastic straps; stuffed with feathers or filled with silicone mixtures

4 - additional cushion

sterilized down, polyester fiber, cotton cover, down stuffing

5 - cover

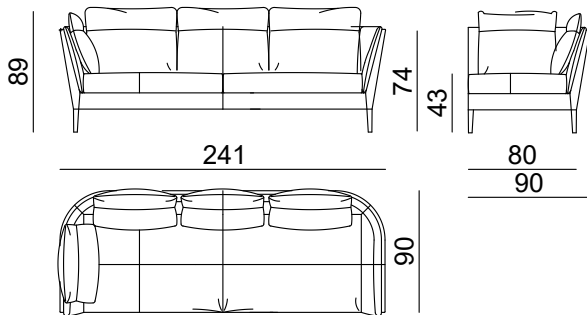
fabric

6 - feet

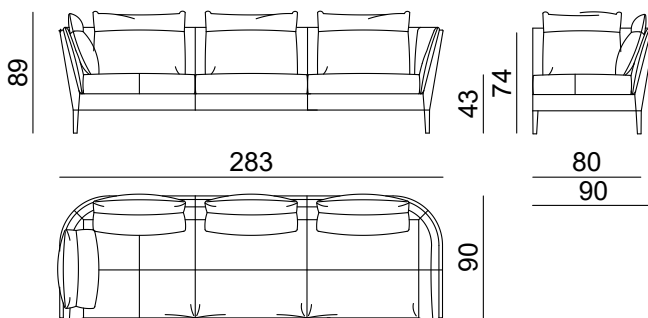
chrome-plated steel, steel covered with fabric, solid wood

DIMENSIONS

two-seater SO KIS 2S



three-seater SO KIS 3S



PACKAGING

two seater

W 241 cm / 95"

D 90 cm / 36"

H 74 cm / 30"

product weight

77 kg / 170 lb

with packaging

palette: 114 kg / 251 lb

packaging dimensions

W 245 cm / 97"

D 103 cm / 37"

H 90 cm / 35"

volume: 2.03 m³ / 72 ft³

three seater

W 283 cm / 112"

D 90 cm / 36"

H 74 cm / 30"

product weight

90 kg / 198 lb

with packaging

palette: 133 kg / 294 lb

packaging dimensions

W 287 cm / 113"

D 103 cm / 37"

H 90 cm / 35"

volume: 2.37 m³ / 84 ft³

STANDARD FABRICS AND FINISHES

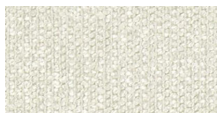


name: ARNO
category: A
composition: 88% PL 12% Co
width: 140 cm
weight: 476 g/m²
martindale: 30.00
info: Flam K

In UK or Eire upholstery must be FR treated
 COLORS MAY VARY FROM LOT TO LOT



F1742/06



F1742/02



F1742/07



F1742/11



F1742/17

RECOMENDED FABRICS AND FINISHES



name: SIRACUSA
category: A
composition: 100% PL
width: 143 cm
weight: 585 g/m²
martindale: 80.000
info: UK Flamcode K

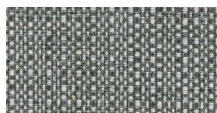
In UK or Eire upholstery must be FR treated
 COLORS MAY VARY FROM LOT TO LOT



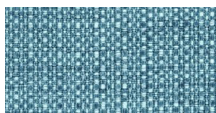
F1950/02



F1950/14



F1950/16



F1950/17

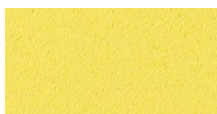


name: SANTIAGO
category: A
composition: 100% PL
width: 140 cm
weight: 320 g/m²
martindale: 30.000
info: UK Flamcode K

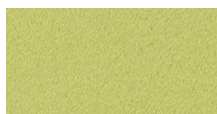
In UK or Eire upholstery must be FR treated
 COLORS MAY VARY FROM LOT TO LOT



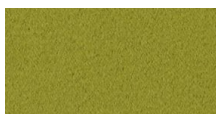
F1650/32



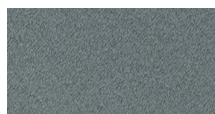
F1650/20



F1650/22

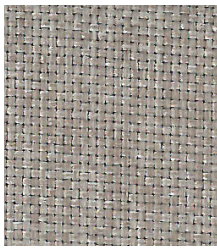


F1650/24



F1650/31

MOYA



name: BYTE
category: B
composition: 100% PI
width: 140 cm
weight: 460 g/m²
martindale: 30.000
info: NO SHRINK
 ISO 3758
 COLORS MAY VARY FROM LOT TO LOT



BYT 8999/401



BYT 8999/400



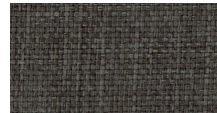
BYT 8999/605



BYT 8999/600



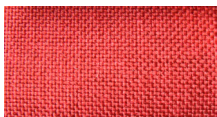
BYT 8999/707



BYT 8999/602



BYT 8999/003



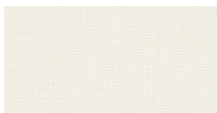
BYT 8999/303



name: FOCUS
category: A
composition: 68% Vi 32% Li
width: 138 cm
weight: 780 g/m²
martindale: 20.000
info:
 COLORS MAY VARY FROM LOT TO LOT



CA1118/053



CA1118/090



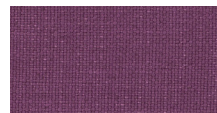
CA1118/071



CA1118/091



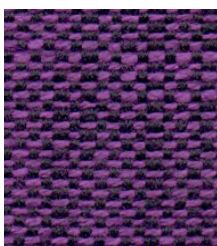
CA1118/092



CA1118/080



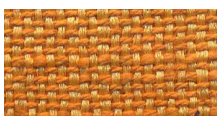
CA1118/095



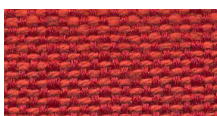
name: CONTRASTO
category: B
composition: 32% PL 21% Co 33% Vi 14% Li
width: 140 cm
weight: 390 g/m²
martindale: 17.500
info: SHRINKAGE -7%
 DO NOT CENTRIFUGE
 COLORS MAY VARY FROM LOT TO LOT



CON 08857/001



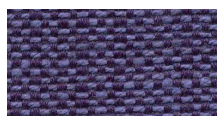
CON 08857/504



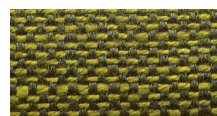
CON 08857/304



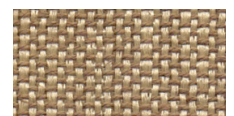
CON 08857/600



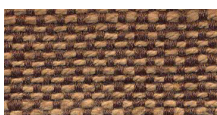
CON 08857/704



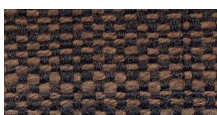
CON 08857/808



CON 08857/807



CON 08857/411



CON 08857/414

MOYA



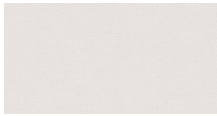
name: HOT MADISON VOL.4
category: B
composition: 63% Co 37% Li
width: 140 cm
weight: 596 g/m²
martindale: 32.500
info:
 COLORS MAY VARY FROM LOT TO LOT



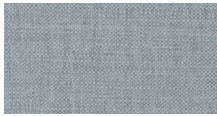
CH1249/497



FEET FINISH
 solid oak wood
category: A



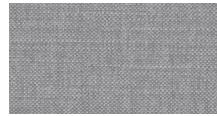
CH1249/420



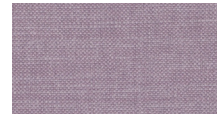
CH1249/056



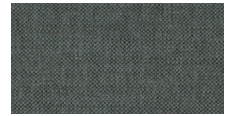
CH1249/052



CH1249/097



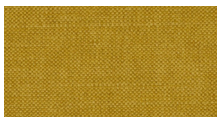
CH1249/991



CH1249/096



CH1249/711



CH1249/528



CH1249/713



CH1249/712



CH1249/038



CH1249/039



CH1249/130



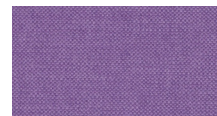
CH1249/705



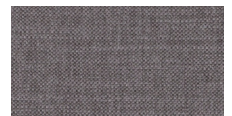
CH1249/706



CH1249/080



CH1249/081



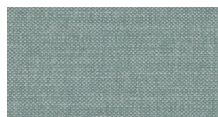
CH1249/191



CH1249/471



CH1249/718



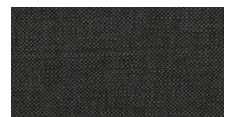
CH1249/722



CH1249/723



CH1249/724



CH1249/934



CH1249/093



CH1249/186



name: BOMBAY
category: B
composition: 100% PL
width: 140 cm
weight: 350 g/m²
martindale: 100.000
info: TEST BS 5852 PART 1
 EN ISO 12947-1 and 2
 COLORS MAY VARY FROM LOT TO LOT



BOM 011-025



BOM 011-001



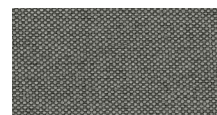
BOM 011-014



BOM 011-024



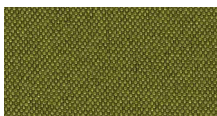
BOM 011-034



BOM 011-026



BOM 011-006



BOM 011-048

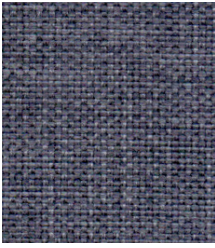


BOM 011-057



BOM 011-037

MOYA



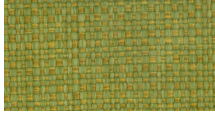
name: FLASH
category: B
composition: 100% Pp
width: 140 cm
weight: 450 g/m²
martindale: 70.000
info: NO SHRINK
ISO 3758
COLORS MAY VARY FROM LOT TO LOT



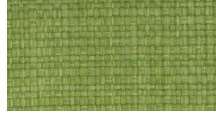
FLA Z8009/707



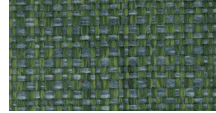
FLA Z8009/100



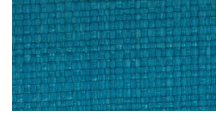
FLA Z8009/804



FLA Z8009/810



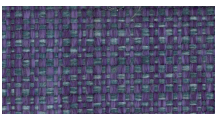
FLA Z8009/807



FLA Z8009/710



FLA Z8009/001



FLA Z8009/005



FLA Z8009/003



FLA Z8009/500



FLA Z8009/305



FLA Z8009/403



FLA Z8009/600



FLA Z8009/601



FLA Z8009/602



FLA Z8009/200

RECOMENDED FINISHES

*for additional information please contact us at office@moyaline.com

FEET



Oak wood
category: A



Stainless steel
category: A



Chrome plated steel
category: A



Painted steel
RAL 9010 Pure White
category: B



Painted steel
RAL 7001 Silver Grey
category: B