

# MOYA



## **VIWO SOFA**

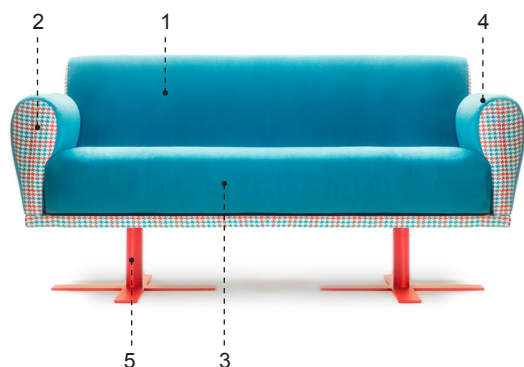
---

**FROM BIRTH, MAN  
CARRIES THE WEIGHT OF  
GRAVITY ON HIS  
SHOULDERS. HE IS BOLTED  
TO EARTH.  
BUT MAN HAS ONLY TO  
SINK BENEATH  
THE SURFACE  
AND HE IS FREE.  
JACQUES YVES COUSTEAU**

Armchair Viwo evokes in us a sense of childhood – memory of exploring shapes and balance in an endless journey, through the magic of surrounding objects. For a child, everyday reality is a world of fiction. Flexible steel construction enables gently moves of the upper part of the armchair, in accordance with the movements of the human body. Natural colors take you into the realm of comfort and pleasure, while bright support indicates where the boundary with reality is – it defines contact with the ground, with the world that is known, and invites you to investigate it. Sitting in Viwo, you are no longer affected by gravity.

# MOYA

## DESCRIPTION



### 1 - internal frame upholstery

flexible cold-shaped polyurethane foam, polyester fiber cover

### 2 - internal frame

flexible tubular steel and steel profiles, solid wood and plywood poplar

### 3 - seat cushions and supports

shaped polyurethane of various densities, polyester fiber

### 4 - cover

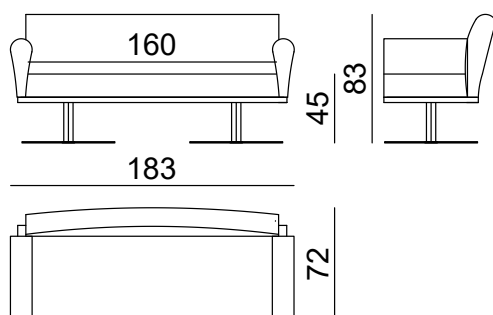
fabric

### 5 - feet

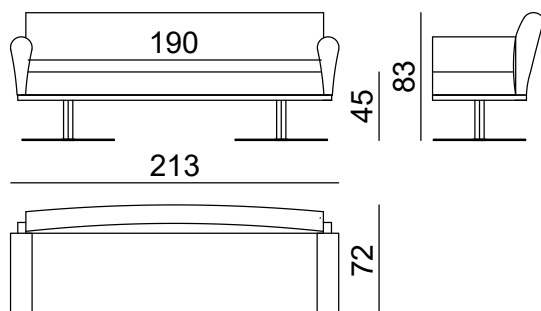
painted steel

## DIMENSIONS

two-seater SO VIW 2S



three-seater SO VIW 3S



## PACKAGING

### two seater

W 183 cm / 72"

D 72 cm / 28"

H 83 cm / 33"

### product weight

72 kg / 159 lb

### with packaging

palette: 95 kg / 209 lb

### packaging dimensions

W 187 cm / 74"

D 76 cm / 30"

H 97 cm / 38"

volume: 1.38 m<sup>3</sup> / 49 ft<sup>3</sup>

### three seater

W 213 cm / 84"

D 72 cm / 28"

H 83 cm / 32"

### product weight

85 kg / 188 lb

### with packaging

palette: 130 kg / 287 lb

### packaging dimensions

W 217 cm / 85"

D 76 cm / 30"

H 97 cm / 38"

volume: 1.60 m<sup>3</sup> / 57 ft<sup>3</sup>

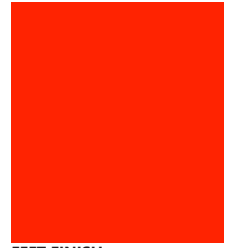
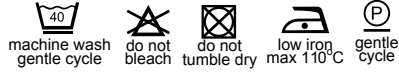
## STANDARD FABRICS AND FINISHES



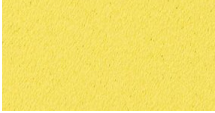
F1650/32

**name:** SANTIAGO  
**category:** A  
**composition:** 100% PL  
**width:** 140 cm  
**weight:** 320 g/m<sup>2</sup>  
**martindale:** 30.000  
**info:** UK Flamcode K

In UK or Eire upholstery must be FR treated  
 COLORS MAY VARY FROM LOT TO LOT



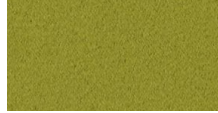
**FEET FINISH**  
 Painted steel  
 RAL 2005 Luminous orange  
 category: A



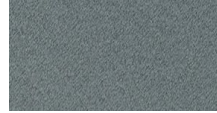
F1650/20



F1650/22



F1650/24



F1650/31

## RECOMENDED FABRICS AND FINISHES



CA1098/021

**name:** MELODY  
**category:** A  
**composition:** FACE 100% Vi  
 BACK 100% Co  
**width:** 137 cm  
**martindale:** 50.000  
**info:** COLORS MAY VARY FROM LOT TO LOT



CA1098/070



CA1098/071



CA1098/024



CA1098/091



CA1098/092



CA1098/094



CA1097/091

**name:** MARVELOUS  
**category:** A  
**composition:** FACE 100% Vi  
 BACK 100% Co  
**width:** 139 cm  
**martindale:** 50.000  
**info:** COLORS MAY VARY FROM LOT TO LOT



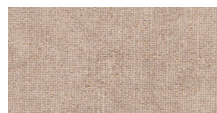
CA1097/071



CA1097/072



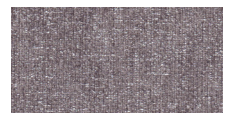
CA1097/073



CA1097/020



CA1097/021

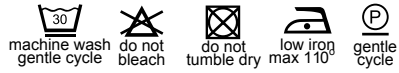


CA1097/026

# MOYA



**name:** ALLURE VELVET  
**category:** A  
**composition:** 100% PI  
**width:** 140 cm  
**martindale:** 40.000  
**info:** COLORS MAY VARY FROM LOT TO LOT



CH1357/085



CH1357/091



CH1357/021



CH1357/080



CH1357/062



CH1357/060



CH1357/010



**name:** NEW YORK VELVET  
**category:** A  
**composition:** FACE 100% Vi  
BACK 100% Co  
**width:** 146 cm  
**weight:** 864 g/m<sup>2</sup>  
**martindale:** 100.000  
**info:** COLORS MAY VARY FROM LOT TO LOT



CA7988/091



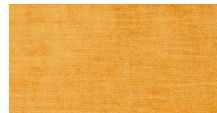
CA7988/073



CA7988/071



CA7988/020



CA7988/040



CA7988/062



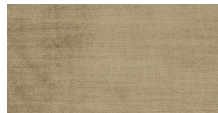
CA7988/064



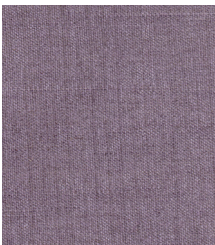
CA7988/041



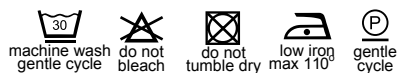
CA7988/032



CA7988/028



**name:** MEMENTO  
**category:** A  
**composition:** 85% Li 15% Vi  
**width:** 140 cm  
**martindale:** 22.000  
**info:** COLORS MAY VARY FROM LOT TO LOT



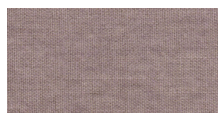
CH2746/081



CH2746/070



CH2746/071



CH2746/072



CH2746/091



# MOYA



**name:** SIRACUSA  
**category:** A  
**composition:** 100% PL  
**width:** 143 cm  
**weight:** 585 g/m<sup>2</sup>  
**martindale:** 80.000  
**info:** UK Flamcode K

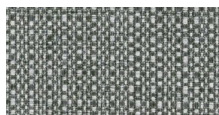
In UK or Eire upholstery must be FR treated  
 COLORS MAY VARY FROM LOT TO LOT



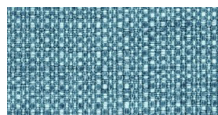
F1950/02



F1950/14



F1950/16



F1950/17

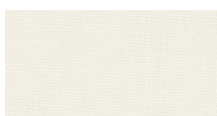


**name:** FOCUS  
**category:** A  
**composition:** 68% Vi 32% Li  
**width:** 138 cm  
**weight:** 780 g/m<sup>2</sup>  
**martindale:** 20.000  
**info:**

COLORS MAY VARY FROM LOT TO LOT



CA1118/053



CA1118/090



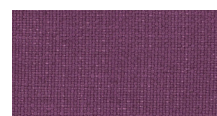
CA1118/071



CA1118/091



CA1118/092



CA1118/080



CA1118/095

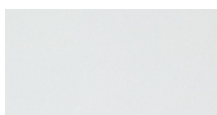


**name:** ANDRE  
**category:** A  
**composition:** 56% Vi 44% Co  
**width:** 147 cm  
**weight:** 580 g/m<sup>2</sup>  
**martindale:** 100.000  
**info:** BS 5852 Part 1

COLORS MAY VARY FROM LOT TO LOT



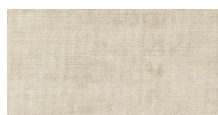
AND 011-003



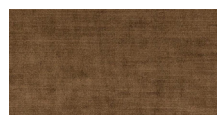
AND 011-005



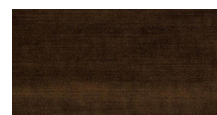
AND 011-004



AND 011-007



AND 011-011



AND 011-012



AND 011-015



AND 011-017



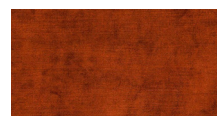
AND 011-019



AND 011-034



AND 011-032



AND 011-029



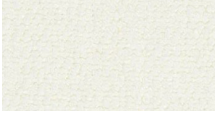
AND 011-027

# MOYA



F1968/02

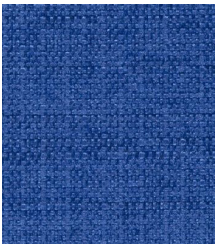
**name:** AUNELLE  
**category:** A+  
**composition:** 70% Li 30% Co  
**width:** 130 cm  
**weight:** 750 g/m<sup>2</sup>  
**martindale:** 22.000  
**info:** UK Flamcode B+M  
Cigarette resistant  
COLORS MAY VARY FROM LOT TO LOT



F1968/01



F1968/03



F2021/21

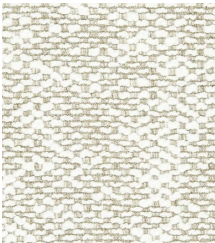
**name:** AUSKERRY  
**category:** A  
**composition:** 100% PL  
**width:** 138 cm  
**weight:** 490 g/m<sup>2</sup>  
**martindale:** 40.000  
**info:** UK Flamcode K  
Fabric must be FR treated for UK/Eire market  
COLORS MAY VARY FROM LOT TO LOT



F2021/05



F2021/13



F1962/01

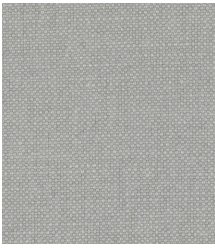
**name:** GENVAL  
**category:** A+  
**composition:** 60% Co 16% PI 16% Li 8% Vi  
**width:** 126 cm  
**weight:** 700 g/m<sup>2</sup>  
**martindale:** 35.000  
**info:** UK Flamcode B+M  
Cigarette resistant  
COLORS MAY VARY FROM LOT TO LOT



F1962/02



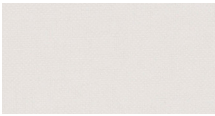
# MOYA



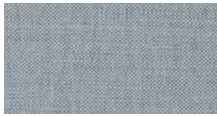
**name:** HOT MADISON VOL.4  
**category:** B  
**composition:** 63% Co 37% Li  
**width:** 140 cm  
**weight:** 596 g/m<sup>2</sup>  
**martindale:** 32.500  
**info:**  
COLORS MAY VARY FROM LOT TO LOT



CH1249/497



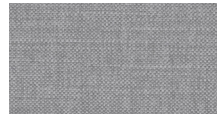
CH1249/420



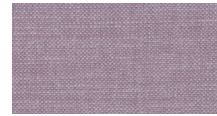
CH1249/056



CH1249/052



CH1249/097



CH1249/991



CH1249/096



CH1249/711



CH1249/528



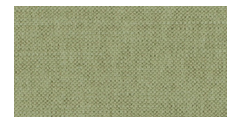
CH1249/713



CH1249/712



CH1249/038



CH1249/039



CH1249/130



CH1249/705



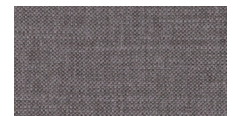
CH1249/706



CH1249/080



CH1249/081



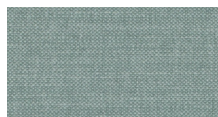
CH1249/191



CH1249/471



CH1249/718



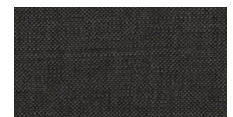
CH1249/722



CH1249/723



CH1249/724



CH1249/934



CH1249/093

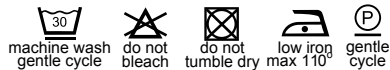


CH1249/186



WIN 011-028

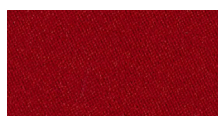
**name:** WINNY  
**category:** B  
**composition:** 100% PI  
**width:** 140 cm  
**weight:** 340 g/m<sup>2</sup>  
**martindale:** 44.000  
**info:**  
TEST BS 5852 PART 1  
DIN EN ISO 12947-1 and 12947-2  
COLORS MAY VARY FROM LOT TO LOT



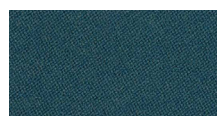
WIN 011-025



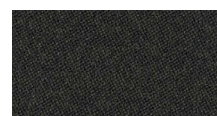
WIN 011-049



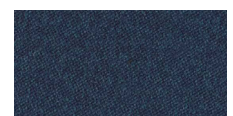
WIN 011-023



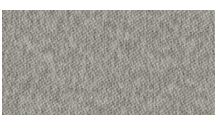
WIN 011-047



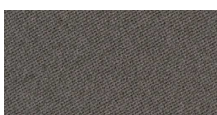
WIN 011-046



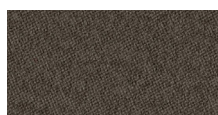
WIN 011-037



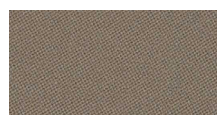
WIN 011-016



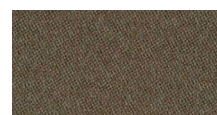
WIN 011-026



WIN 011-054



WIN 011-024



WIN 011-044

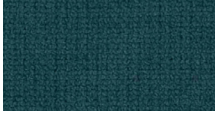
# MOYA



**name:** CHANTAL  
**category:** B  
**composition:** 100% PL  
**width:** 140 cm  
**weight:** 456 g/m<sup>2</sup>  
**martindale:** 100.000  
**info:** TEST BS 5852 PART 1  
 DIN EN ISO 12947-1 and 12947-2  
 COLORS MAY VARY FROM LOT TO LOT

machine wash  
 do not bleach  
 do not tumble dry  
 low iron  
 gentle cycle

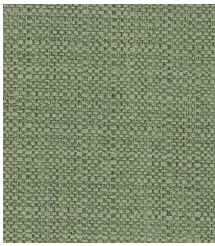
CHA 011-186



CHA 011-047



CHA 011-089



**name:** LINO  
**category:** B  
**composition:** FACE 100% PL BACK 95% PI 5% Co  
**width:** 145 cm  
**weight:** 440 g/m<sup>2</sup>  
**martindale:** 30.000  
**info:** TEST BS 5852 PART 1  
 DIN EN ISO 12947-1 and 12947-2  
 COLORS MAY VARY FROM LOT TO LOT

machine wash  
 do not bleach  
 do not tumble dry  
 do not iron  
 gentle cycle

LIN 011-038



LIN 011-004



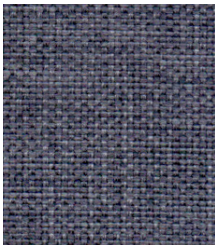
LIN 011-044



LIN 011-054



LIN 011-056



**name:** FLASH  
**category:** B  
**composition:** 100% Pp  
**width:** 140 cm  
**weight:** 450 g/m<sup>2</sup>  
**martindale:** 70.000  
**info:** NO SHRINK  
 ISO 3758  
 COLORS MAY VARY FROM LOT TO LOT

machine wash  
 do not bleach  
 drip dry  
 do not iron  
 do not dryclean

FLA Z8009/707



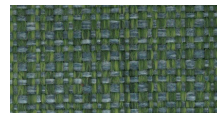
FLA Z8009/100



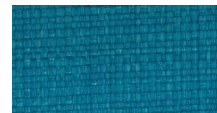
FLA Z8009/804



FLA Z8009/810



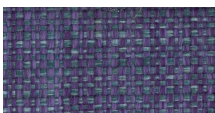
FLA Z8009/807



FLA Z8009/710



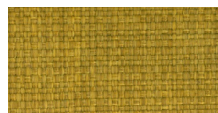
FLA Z8009/001



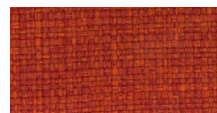
FLA Z8009/005



FLA Z8009/003



FLA Z8009/500



FLA Z8009/305



FLA Z8009/403



FLA Z8009/600



FLA Z8009/601



FLA Z8009/602



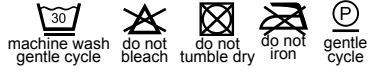
FLA Z8009/200



# MOYA



**name:** ROMEO  
**category:** B  
**composition:** 90% Pes 9% Co 1% Pa  
**width:** 140 cm  
**weight:** 650 g/m<sup>2</sup>  
**martindale:** 45.000  
**info:** AQUA CLEAN TECHNOLOGY  
stains disappear when applying water  
COLORS MAY VARY FROM LOT TO LOT



ROMEO-12



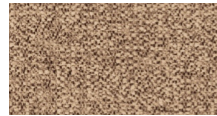
ROMEO-01



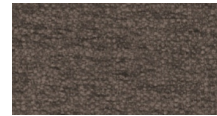
ROMEO-02



ROMEO-04



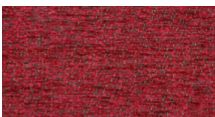
ROMEO-05



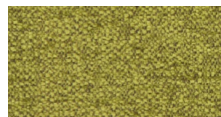
ROMEO-31



ROMEO-07



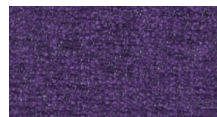
ROMEO-08



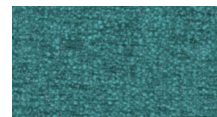
ROMEO-26



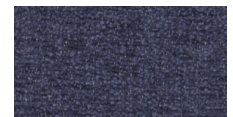
ROMEO-10



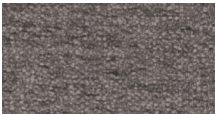
ROMEO-22



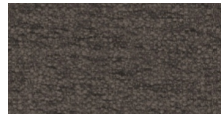
ROMEO-29



ROMEO-11



ROMEO-13



ROMEO-14



ROMEO-15



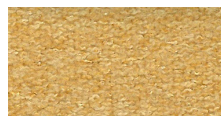
**name:** RALLY  
**category:** B  
**composition:** 100% Pes  
**width:** 140 cm  
**weight:** 590 g/m<sup>2</sup>  
**martindale:** 20.000  
**info:** NO SHRINK, WATER REPELLENT  
ISO 3758  
COLORS MAY VARY FROM LOT TO LOT



RAL 09083/811



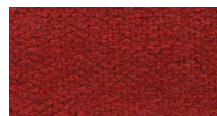
RAL 09083/111



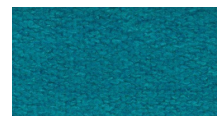
RAL 09083/511



RAL 09083/307



RAL 09083/305



RAL 09083/711

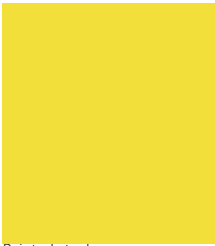


RAL 09083/705

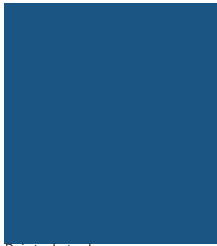
## RECOMENDED FINISHES

\*for additional information please contact us at [office@moyaline.com](mailto:office@moyaline.com)

### FEET



Painted steel  
RAL 1018 Zinc yellow  
category: B



Painted steel  
RAL 5019 Capri Blue  
category: B



Painted steel  
RAL 6017 May green  
category: B



Painted steel  
RAL 9010 Pure White  
category: B



Painted steel  
RAL 7001 Silver Grey  
category: B