

# MOYA



## **OLIVE SOFA**

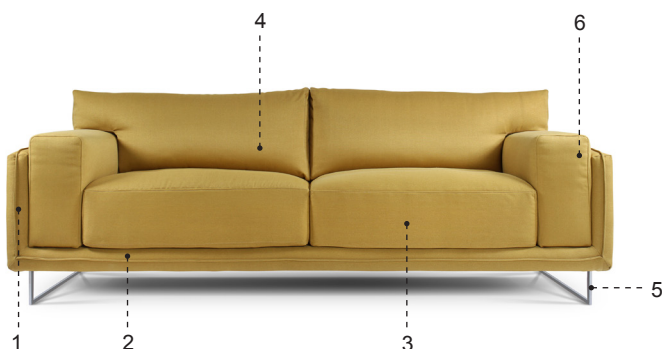
---

**IT IS THE SWEET, SIMPLE  
THINGS OF LIFE WHICH ARE  
THE REAL ONES AFTER ALL.  
LAURA INGALLS WILDER**

The Olive is a sofa made for someone with a refined sense for details, who enjoys the pureness of commodity and simplicity. The thin defined frame shapes the comfortable down cushions in an adaptable form, the seat and back rest. The sofa is elevated on stainless steel feet, giving it a sense of humbleness and tenderness, gently floating in space. With its L-shape, the Olive easily fits into a modern or a classic setting. It can be made in various dimensions, with extended and deeper seats.

# MOYA

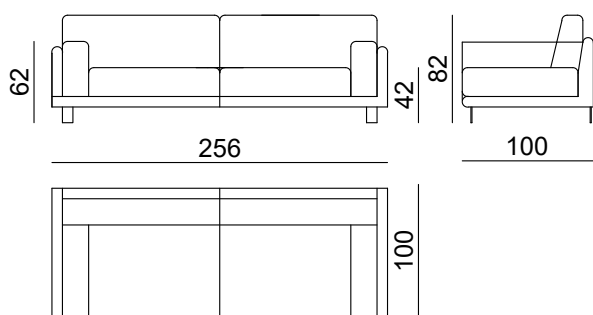
## DESCRIPTION



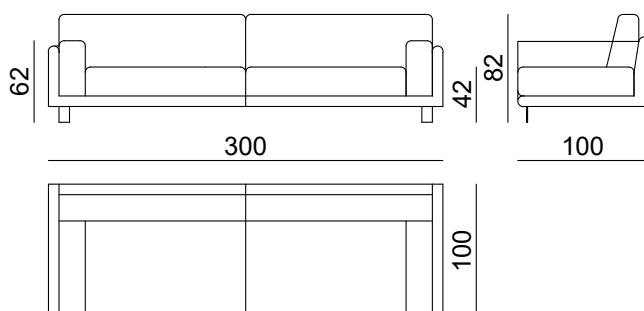
- 1 - Internal frame**  
tubular steel and steel profiles
- 2 - Internal frame upholstery**  
flexible cold-shaped polyurethane foam, polyester fibre cover
- 3 - Seat cushions and their support**  
shaped polyurethane of various densities covered with polyester fibre
- 4 - Additional cushion**  
sterilised down, polyester fibrecotton cover, down stuffing; removable cover
- 5 - Feet**  
stainless steel, painted steel
- 6 - Cover**  
fabric or leather

## DIMENSIONS

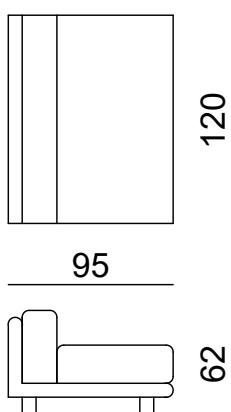
two-seater SO OLI 2S



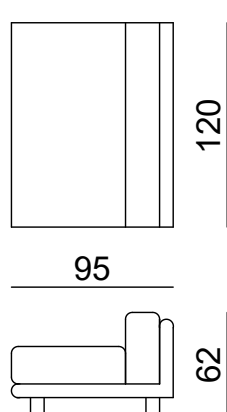
three-seater SO OLI 3S



corner SO OLI C1-L



corner SO OLI C1-R



## PACKAGING

---

**two seater**

W 256 cm / 100"

D 100 cm / 40"

H 62 cm / 24"

**product weight**

89 kg / 196 lb

**with packaging**

palette: 132 kg / 291 lb

**packaging dimensions**

W 260 cm / 102"

D 104 cm / 41"

H 76 cm / 30"

volume: 2.06 m<sup>3</sup> / 73 ft<sup>3</sup>

**three seater**

W 300 cm / 118"

D 100 cm / 40"

H 62 cm / 24"

**product weight**

105 kg / 231 lb

**with packaging**

palette: 155 kg / 343 lb

**packaging dimensions**

W 304 cm / 120"

D 104 cm / 41"

H 76 cm / 30"

volume: 2.40 m<sup>3</sup> / 85 ft<sup>3</sup>

**corner**

W 120 cm / 47"

D 95 cm / 37"

H 62 cm / 24"

**product weight**

40 kg / 88 lb

**with packaging**

palette: 59 kg / 131 lb

**packaging dimensions**

W 124 cm / 49"

D 99 cm / 39"

H 76 cm / 30"

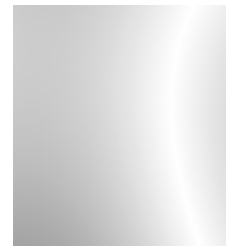
volume: 0.93 m<sup>3</sup> / 33 ft<sup>3</sup>

## STANDARD FABRICS AND FINISHES



BOM 011-025

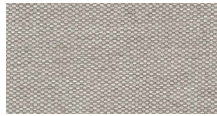
**name:** BOMBAY  
**category:** B  
**composition:** 100% PL  
**width:** 140 cm  
**weight:** 350 g/m<sup>2</sup>  
**martindale:** 100.000  
**info:** TEST BS 5852 PART 1  
 EN ISO 12947-1 and 2  
 COLORS MAY VARY FROM LOT TO LOT



Chrome plated steel  
category: A



BOM 011-001



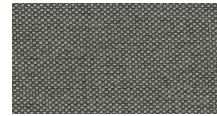
BOM 011-014



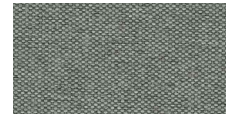
BOM 011-024



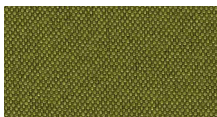
BOM 011-034



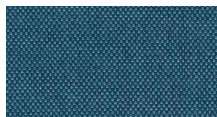
BOM 011-026



BOM 011-006



BOM 011-048



BOM 011-057



BOM 011-037

## RECOMENDED FABRICS AND FINISHES

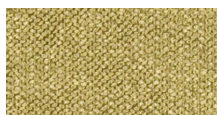


F1742/06

**name:** ARNO  
**category:** A  
**composition:** 88% PL 12% Co  
**width:** 140 cm  
**weight:** 476 g/m<sup>2</sup>  
**martindale:** 30.00  
**info:** Flam K  
 In UK or Eire upholstery must be FR treated  
 COLORS MAY VARY FROM LOT TO LOT



F1742/02



F1742/07



F1742/11

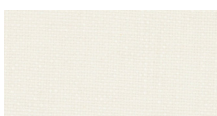


F1742/17



CA1118/053

**name:** FOCUS  
**category:** A  
**composition:** 68% Vi 32% Li  
**width:** 138 cm  
**weight:** 780 g/m<sup>2</sup>  
**martindale:** 20.000  
**info:**  
 COLORS MAY VARY FROM LOT TO LOT



CA1118/090



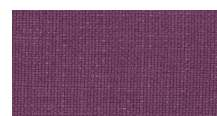
CA1118/071



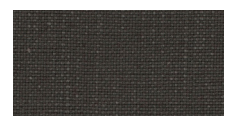
CA1118/091



CA1118/092



CA1118/080



CA1118/095

# MOYA



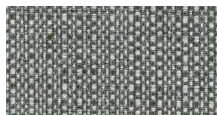
F1950/02

**name:** SIRACUSA  
**category:** A  
**composition:** 100% PL  
**width:** 143 cm  
**weight:** 585 g/m<sup>2</sup>  
**martindale:** 80.000  
**info:** UK Flamcode K

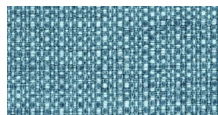
In UK or Eire upholstery must be FR treated  
COLORS MAY VARY FROM LOT TO LOT



F1950/14



F1950/16



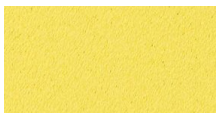
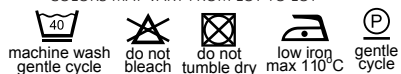
F1950/17



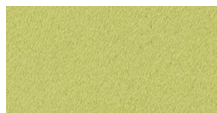
F1650/32

**name:** SANTIAGO  
**category:** A  
**composition:** 100% PL  
**width:** 140 cm  
**weight:** 320 g/m<sup>2</sup>  
**martindale:** 30.000  
**info:** UK Flamcode K

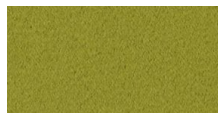
In UK or Eire upholstery must be FR treated  
COLORS MAY VARY FROM LOT TO LOT



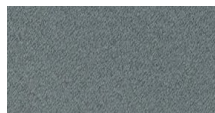
F1650/20



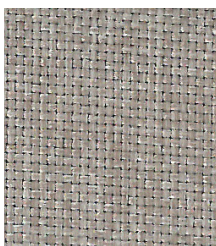
F1650/22



F1650/24



F1650/31



BYT 8999/401

**name:** BYTE  
**category:** B  
**composition:** 100% PI  
**width:** 140 cm  
**weight:** 460 g/m<sup>2</sup>  
**martindale:** 30.000  
**info:** NO SHRINK  
ISO 3758

COLORS MAY VARY FROM LOT TO LOT



BYT 8999/400



BYT 8999/605



BYT 8999/600



BYT 8999/707



BYT 8999/602



BYT 8999/003



BYT 8999/303

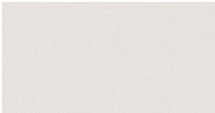
# MOYA



**name:** HOT MADISON VOL.4  
**category:** B  
**composition:** 63% Co 37% Li  
**width:** 140 cm  
**weight:** 596 g/m<sup>2</sup>  
**martindale:** 32.500  
**info:**  
 COLORS MAY VARY FROM LOT TO LOT



CH1249/497



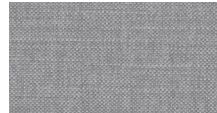
CH1249/420



CH1249/056



CH1249/052



CH1249/097



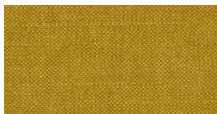
CH1249/991



CH1249/096



CH1249/711



CH1249/528



CH1249/713



CH1249/712



CH1249/038



CH1249/039



CH1249/130



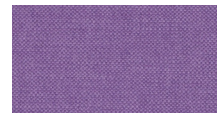
CH1249/705



CH1249/706



CH1249/080



CH1249/081



CH1249/191



CH1249/471



CH1249/718



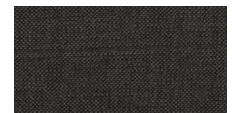
CH1249/722



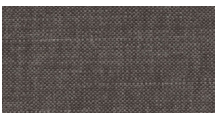
CH1249/723



CH1249/724



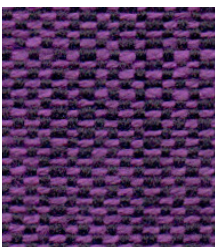
CH1249/934



CH1249/093

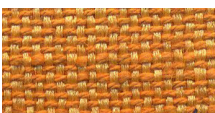


CH1249/186

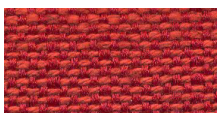


CON 08857/001

**name:** CONTRASTO  
**category:** B  
**composition:** 32% PL 21% Co 33% Vi 14% Li  
**width:** 140 cm  
**weight:** 390 g/m<sup>2</sup>  
**martindale:** 17.500  
**info:** SHRINKAGE -7%  
 DO NOT CENTRIFUGE  
 COLORS MAY VARY FROM LOT TO LOT



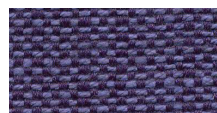
CON 08857/504



CON 08857/304



CON 08857/600



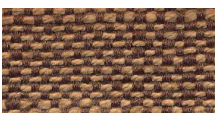
CON 08857/704



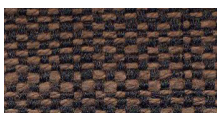
CON 08857/808



CON 08857/807

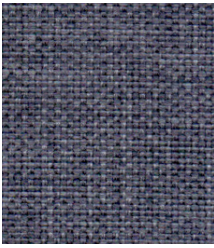


CON 08857/411



CON 08857/414

# MOYA



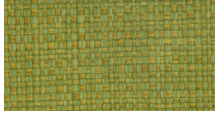
**name:** FLASH  
**category:** B  
**composition:** 100% Pp  
**width:** 140 cm  
**weight:** 450 g/m<sup>2</sup>  
**martindale:** 70.000  
**info:** NO SHRINK  
ISO 3758  
COLORS MAY VARY FROM LOT TO LOT



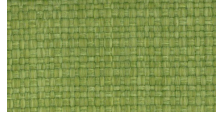
FLA Z8009/707



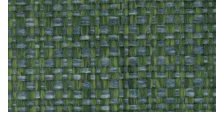
FLA Z8009/100



FLA Z8009/804



FLA Z8009/810



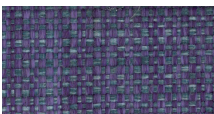
FLA Z8009/807



FLA Z8009/710



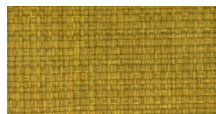
FLA Z8009/001



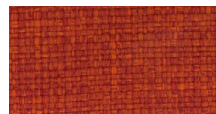
FLA Z8009/005



FLA Z8009/003



FLA Z8009/500



FLA Z8009/305



FLA Z8009/403



FLA Z8009/600



FLA Z8009/601



FLA Z8009/602



FLA Z8009/200

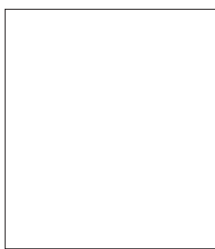
## RECOMENDED FINISHES

\*for additional information please contact us at [office@moyaline.com](mailto:office@moyaline.com)

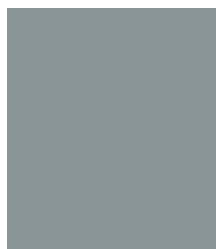
### FRAME STAND / SIDE SHELF



Stainless steel  
category: A



Painted steel  
RAL 9010 Pure White  
category: B



Painted steel  
RAL 7001 Silver Grey  
category: B